

Nomura Home Equity Loan Trust, Series 2005-HE1



Pool Summary	October-08		
Delinquency Status Summary:			
	%	\$	#
Current	55.12%	\$157,077,289	1,507
30 Day DQ	5.03%	\$14,334,158	-
60 Day DQ	3.06%	\$8,720,183	-
90+ Day DQ	6.97%	\$19,862,640	-
Bankruptcy	3.41%	\$9,717,590	-
Foreclosure	15.33%	\$43,686,408	-
Real Estate Owned (REO)	11.08%	\$31,575,043	-
Total 90+ Days Bucket	36.79%	\$104,841,681	-
Total	100.00%	\$284,973,310	1,507

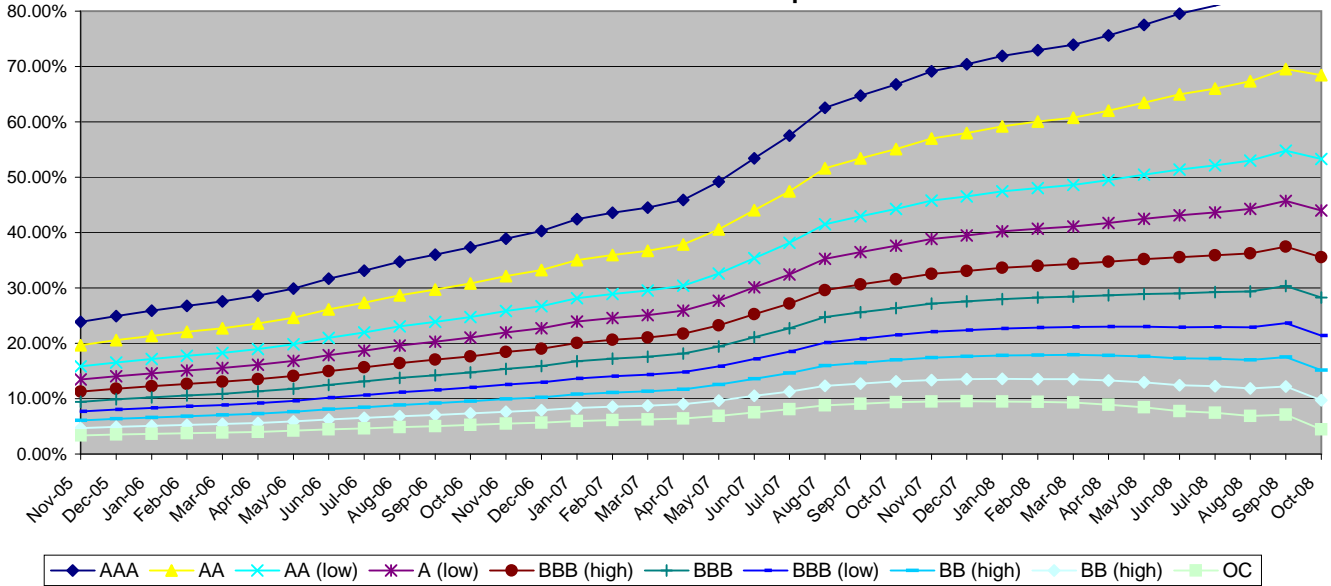
Excess Spread, Delinquency and Loss Analysis:		
	%	\$
Excess Spread (XS) Annualized	4.15%	11,819,108
Monthly XS - 3 month average	4.62%	13,167,674
Average 90 day+ DQ - 3 month average	37.15%	105,862,706
Delinquency Coverage Ratio:	0.26	
3 Month Average XS + OC / potential losses from Total 90+ Days Bucket		
DBRS Single B Cum loss assumption at Deal inception	4.05%	46,579,919
Monthly losses - 3 month average	0.41%	4,703,342
Cumulative Losses to date as a percent of original balance	3.72%	42,754,994.13

Pool Statistics:			
Current:		Original	
Mortgage Originator	Option One 34%, Quick Loan Funding 21%, New Century 19%	Balance	1,150,121,445
		Mortgage Insurer	MGIC
		% of loans with MI	22.59%
Servicer	Select Portfolio Servicing 64% Countrywide Home Loan Servicing 36%	DT LTV Coverage	62.21%
		LTV	79.31%
		Combined LTV	82.85%
Provider of Reps and Warranties	DLJ MORTGAGE CAPITAL, INC.	FICO	615
		RWFICO	593
		WAM	358
Trustee	HSBC Bank USA N.A.	WAC	7.35%
		OC (At Issuance)	1.45%
		OC Target	1.45%
Repurchase/EPDs	NA	Fixed	13.94%
% of original balance with modifications	NA	ARM	86.06%
% repayment plan/forebearance	NA	average month to reset	25
Current balance	\$284,973,310	Cash-out	50.90%
Pool Factor	24.78%	Purchase	48.40%
Current OC as % of current Balance	0.00%	1st lien with piggy back	43.19%
Months of seasoning	36	Second Liens	4.77%
Pricing CPR	33.61%	Fully Amortizing	73.28%
Current CPR	24.65%	Balloons	-
WAM	314	Interest Only	26.72%
WAC	8.24%	average I/O period	24
		Investor Owned	4.74%
Trigger & Step-down Analysis:		Single Family	85.56%
DQ Trigger	FAIL	Full Doc	-
Total 60+ days Bucket	39.85%	Limited Doc	62.24%
DQ Trigger Threshold	28.82%	Stated Doc	37.76%
Cum Loss Trigger	FAIL		
Cumulative Losses to date as a percent of original balance	3.72%		
Cum Loss Trigger Threshold	3.30%		
Step-down Date	No		

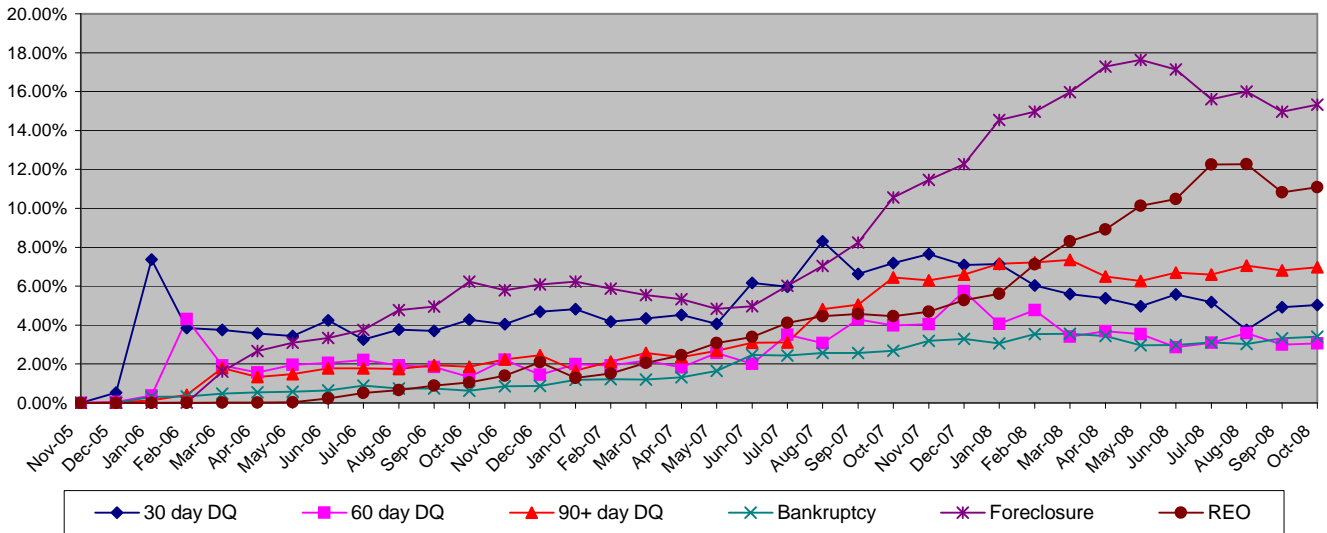
PARsurveillance@dbrs.com

Class Information											
Class Name	Original Rating	Current Rating	Original CE %	Current CE %	Gross Loss %	Current Bond Balance \$	Current Period Writedown \$	Class Factor %	Curr CE / Orig. CE	Delinquency Coverage Ratio	
I-A-1	AAA	AAA	23.15%	84.77%	25.00%	11,490,447	-	3.95%	3.66		5.11
I-A-2	AAA	AAA	23.15%	84.77%	25.00%	2,872,594	-	3.95%	3.66		5.11
II-A-1	AAA	Disc. - Repaid	23.15%	84.77%	25.00%	-	-	0.00%	3.66		5.11
II-A-2	AAA	AAA	23.15%	84.77%	25.00%	17,557,397	-	10.50%	3.66		5.11
II-A-3	AAA	AAA	23.15%	84.77%	25.00%	11,495,000	-	100.00%	3.66		5.11
M-1	AA (high)	AA (high)	19.10%	68.42%	20.50%	46,579,000	-	100.00%	3.58		4.18
M-2	AA	AA	15.35%	53.29%	18.25%	43,129,000	-	100.00%	3.47		3.31
M-3	AA (low)	AA (low)	13.05%	44.00%	16.33%	26,452,000	-	100.00%	3.37		2.78
M-4	A (high)	A (high)	10.95%	35.53%	14.42%	24,152,000	-	100.00%	3.24		2.30
M-5	A	A	9.15%	28.26%	12.50%	20,702,000	-	100.00%	3.09		1.88
M-6	A (low)	A (low)	7.45%	21.40%	11.08%	19,552,000	-	100.00%	2.87		1.49
M-7	BBB (high)	BBB (high)	5.90%	15.15%	9.67%	17,826,000	-	100.00%	2.57		1.13
M-8	BBB	BBB (low)	4.55%	9.70%	8.25%	15,526,000	-	100.00%	2.13		0.82
M-9	BBB (low)	BB	3.25%	4.45%	7.43%	14,951,000	-	100.00%	1.37		0.52
B-1	BB (high)	BB (low)	2.45%	1.22%	6.62%	9,200,000	-	100.00%	0.50		0.33
B-2	BB (high)	B (high)	1.45%	0.00%	6.62%	3,488,871	3,823,537	30.34%	0.00	-	
P	NR	NR	0.00%	0.00%	-	-	-	0.00%	-	-	
OC	NR	NR	1.45%	0.00%	-	-	-	0.00%	0.00	-	

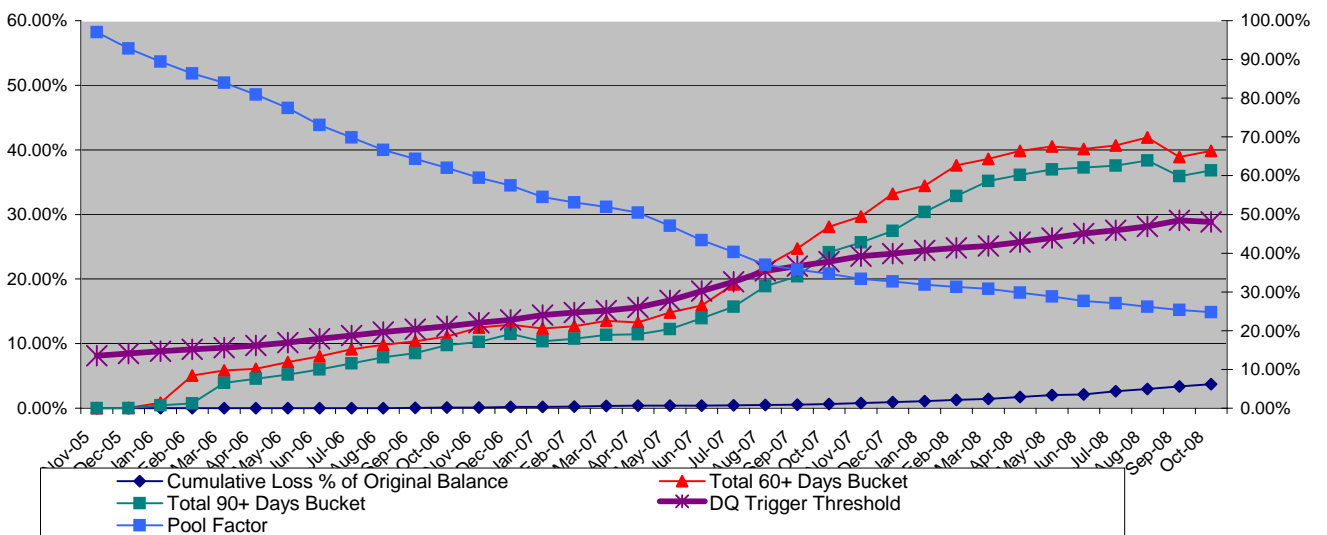
Credit Enhancement Graph



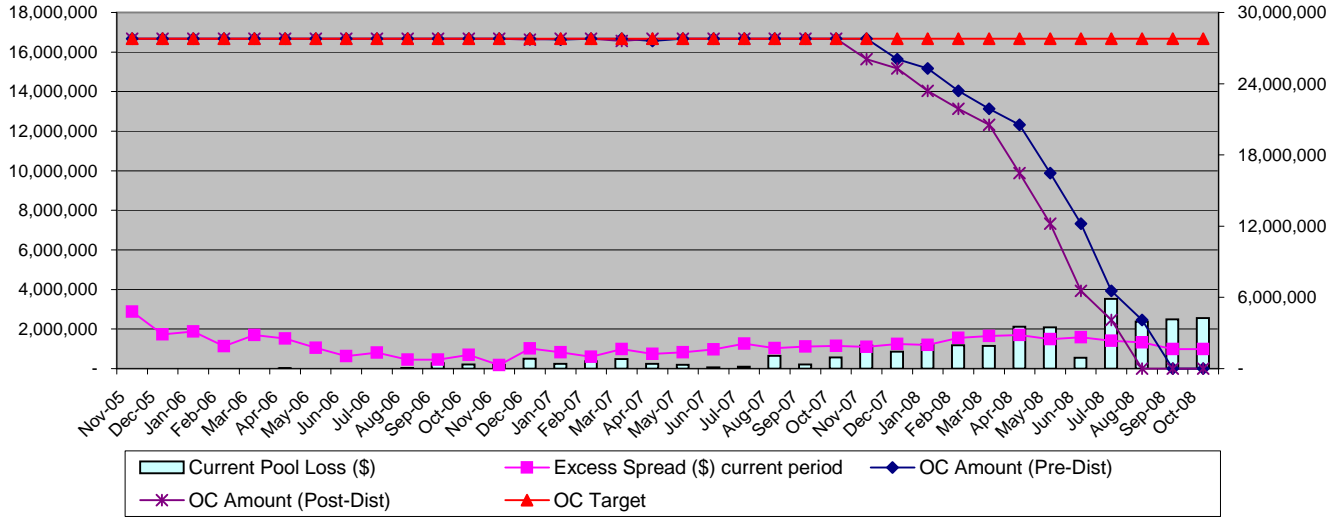
Delinquency Graph



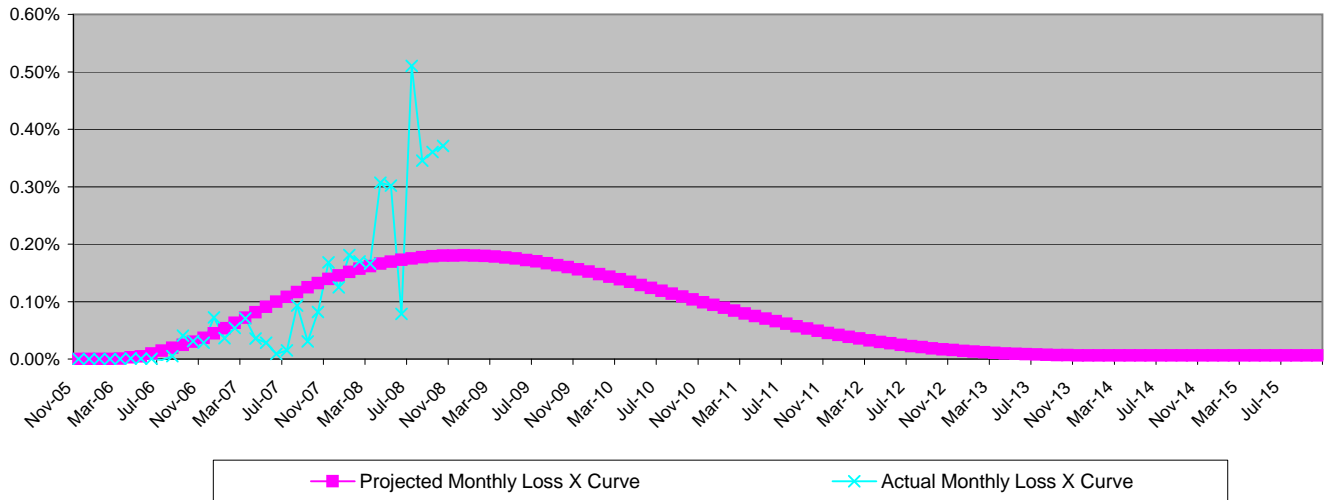
Performance Trend Analysis



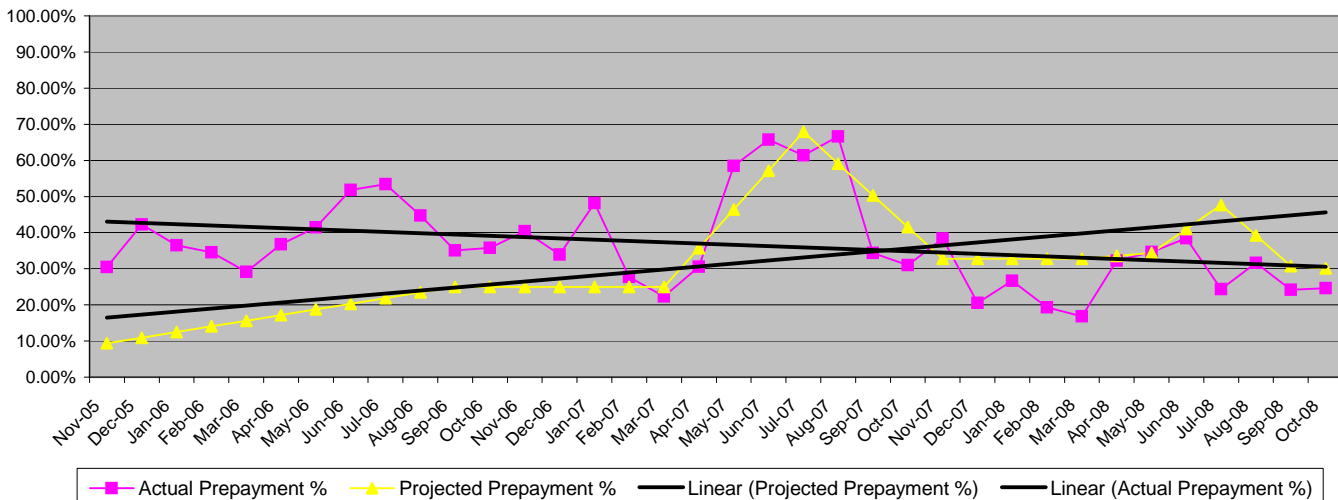
Overcollateralization, Excess Spread & Monthly Losses



Loss Timing Curve vs. Actual Collateral Losses



Actual vs. Projected Prepayments



Copyright © 2007, DBRS Limited, DBRS, Inc. and DBRS (Europe) Limited (collectively, DBRS). All rights reserved. The information upon which DBRS ratings and reports are based is obtained by DBRS from sources believed by DBRS to be accurate and reliable. DBRS does not perform any audit and does not independently verify the accuracy of the information provided to it. DBRS ratings, reports and any other information provided by DBRS are provided "as is" and without warranty of any kind. DBRS hereby disclaims any representation or warranty, express or implied, as to the accuracy, timeliness, completeness, merchantability, fitness for any particular purpose or non-infringement of any of such information. In no event shall DBRS or its directors, officers, employees, independent contractors, agents and representatives (collectively, DBRS Representatives) be liable (1) for any inaccuracy, delay, interruption in service, error or omission or for any resulting damages or (2) for any direct, indirect, incidental, special, compensatory or consequential damages with respect to any error (negligent or otherwise) or other circumstance or contingency within or outside the control of DBRS or any DBRS Representatives in connection with or related to obtaining, collecting, compiling, analyzing, interpreting, communicating, publishing or delivering any information. Ratings and other opinions issued by DBRS are, and must be construed solely as, statements of opinion and not statements of fact as to credit worthiness or recommendations to purchase, sell or hold any securities. DBRS receives compensation, ranging from US\$1,000 to US\$750,000 (or the applicable currency equivalent) from issuers, insurers, guarantors and/or underwriters of debt securities for assigning ratings. This publication may not be reproduced, retransmitted or distributed in any form without the prior written consent of DBRS.