

Nomura Home Equity Loan, Inc., Home Equity Loan Trust, Series 2006-FM2



Pool Summary		October-08	
Delinquency Status Summary:			
	%	\$	#
Current	42.76%	\$328,873,223	3,326
30 Day DQ	5.08%	\$39,071,000	-
60 Day DQ	3.53%	\$27,149,731	-
90+ Day DQ	2.21%	\$16,997,423	-
Bankruptcy	3.07%	\$23,611,805	-
Foreclosure	27.18%	\$209,045,234	-
Real Estate Owned (REO)	16.17%	\$124,365,763	-
Total 90+ Days Bucket	48.63%	\$374,020,225	-
Total	100.00%	\$769,114,178	3,326

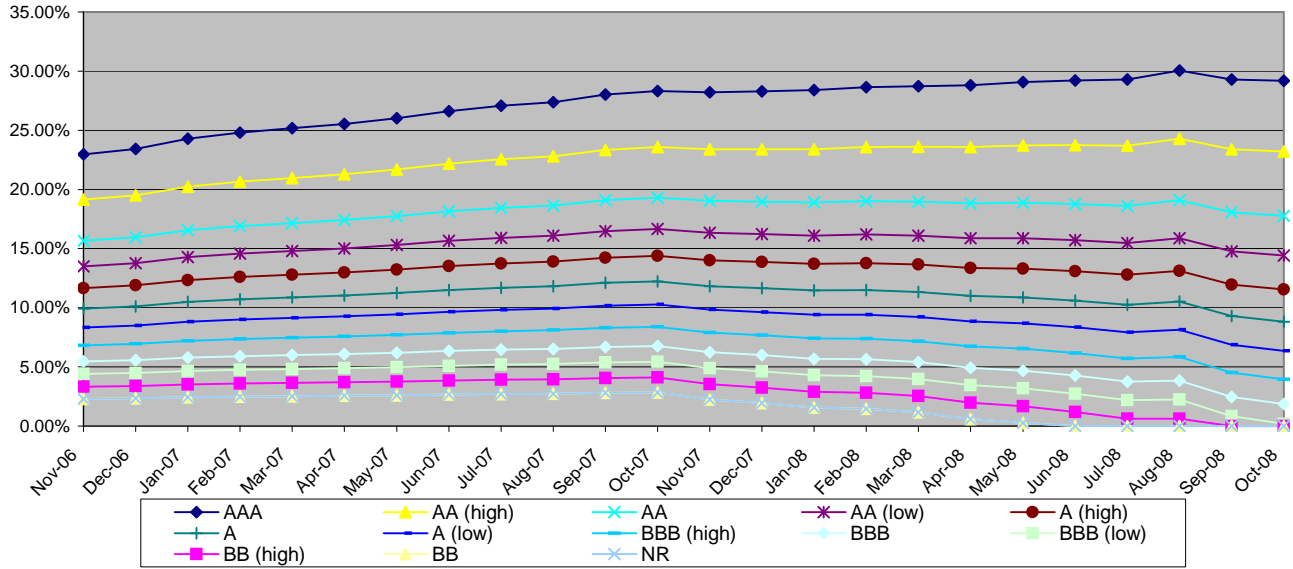
Excess Spread, Delinquency and Loss Analysis:		
	%	\$
Excess Spread (XS) Annualized	4.98%	38,340,020
Monthly XS - 3 month average	5.66%	43,501,377
Total 90+ Days Bucket - 3 month average	43.55%	334,913,596
Delinquency Coverage Ratio:	0.24	
3 Month Average XS + OC / potential losses from Total 90+ Days Bucket		
DBRS Single B Cum loss assumption at Deal inception	4.75%	58,332,011
Monthly losses - 3 month average	0.83%	10,157,590
Cumulative Losses to date as a percent of original balance	7.16%	87,896,946.09

Pool Statistics:			
Current:		Original	
Mortgage Originator	Fremont Investment & Loan	Balance	1,228,042,345
Servicer	Equity One, Inc.	Mortgage Insurer	NA
Provider of Reps and Warranties	Nomura Credit & Capital, Inc.	% of loans with MI	0.00%
Trustee	HSBC Bank USA N.A.	DT LTV Coverage	0.00%
Repurchase/EPDs	NA	LTV	80.96%
% of original balance with modifications	NA	Combined LTV	88.28%
% repayment plan/forebearance	NA	FICO	627
Current balance	\$769,114,178	RWFICO	607
Pool Factor	62.63%	WAM	359
Current OC as % of current Balance	0.00%	WAC	8.47%
Months of seasoning	24	OC (At Issuance)	2.25%
Pricing CPR		OC Target	2.25%
Current CPR	19.49%	Fixed	18.27%
WAM	332	ARM	81.73%
WAC	8.60%	average month to reset	24.2
Trigger & Step-down Analysis		Cash-out	46.00%
DQ Trigger	FAIL	Purchase	52.50%
Total 60+ days Bucket	52.16%	1st lien with piggy back	45.12%
DQ Trigger Threshold	10.40%	Second Liens	6.90%
Cum Loss Trigger	FAIL	Fully Amortizing	50.46%
Cumulative Losses to date as a percent of original balance	7.16%	Balloons	37.37%
Cum Loss Trigger Threshold	3.45%	Interest Only	12.18%
Step-down Date	No	average I/O period	60
		Investor Owned	5.42%
		Single Family	81.03%
		Full Doc	0.00%
		Limited Doc	54.53%
		Stated Doc	45.47%

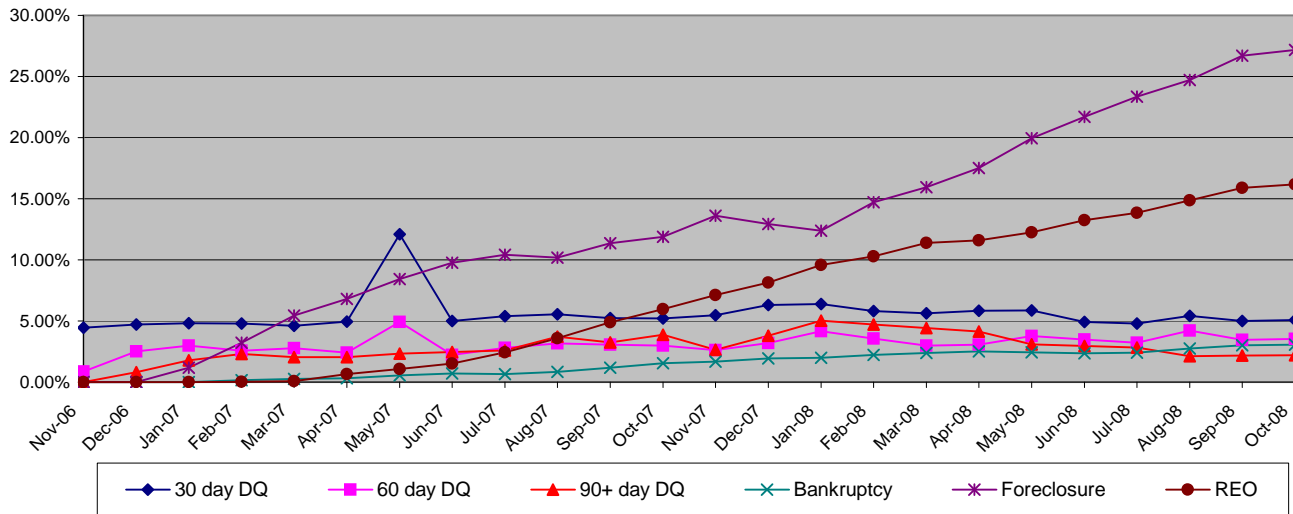
PARsurveillance@dbrs.com

Class Information										
Class Name	Original Rating	Current Rating	Original CE %	Current CE %	Gross Loss %	Current Bond Balance \$	Current Period Writedown \$	Class Factor %	Curr CE / Orig. CE	Delinquency Coverage Ratio
I-A-1	AAA	AA (low)	22.45%	29.18%	27.75%	288,902,271	-	55.01%	1.30	1.51
II-A-1	AAA	AA (low)	22.45%	29.18%	27.75%	109,396,858	-	38.96%	1.30	1.51
II-A-2	AAA	AA (low)	22.45%	29.18%	27.75%	41,264,000	-	100.00%	1.30	1.51
II-A-3	AAA	AA (low)	22.45%	29.18%	27.75%	93,007,000	-	100.00%	1.30	1.51
II-A-4	AAA	AA (low)	22.45%	29.18%	27.75%	12,103,000	-	100.00%	1.30	1.51
M-1	AA (high)	A (low)	18.70%	23.19%	22.25%	46,051,000	-	100.00%	1.24	1.25
M-2	AA	BBB	15.30%	17.77%	19.50%	41,753,000	-	100.00%	1.16	1.01
M-3	AA (low)	BBB (low)	13.20%	14.41%	17.50%	25,788,000	-	100.00%	1.09	0.87
M-4	A (high)	BB (high)	11.40%	11.54%	15.50%	22,104,000	-	100.00%	1.01	0.74
M-5	A	BB (high)	9.70%	8.82%	13.50%	20,876,000	-	100.00%	0.91	0.63
M-6	A (low)	BB	8.15%	6.35%	12.08%	19,034,000	-	100.00%	0.78	0.52
M-7	BBB (high)	BB (low)	6.65%	3.95%	10.67%	18,420,000	-	100.00%	0.59	0.42
M-8	BBB	B (high)	5.35%	1.88%	9.25%	15,964,000	-	100.00%	0.35	0.33
M-9	BBB (low)	B	4.30%	0.20%	8.42%	12,894,000	-	100.00%	0.05	0.25
B-1	BB (high)	B (low)	3.25%	0.00%	7.58%	1,557,049	4,925,315	12.08%	0.00	0.24
B-2	BB	C	2.25%	0.00%	6.75%	-	-	0.00%	0.00	0.24
OC	NR	NR	2.25%	0.00%	0.00%	100	-	0.00%	0.00	0.24
P	NR	NR	0.00%	0.00%	0.00%	-	-	0.00%	-	-

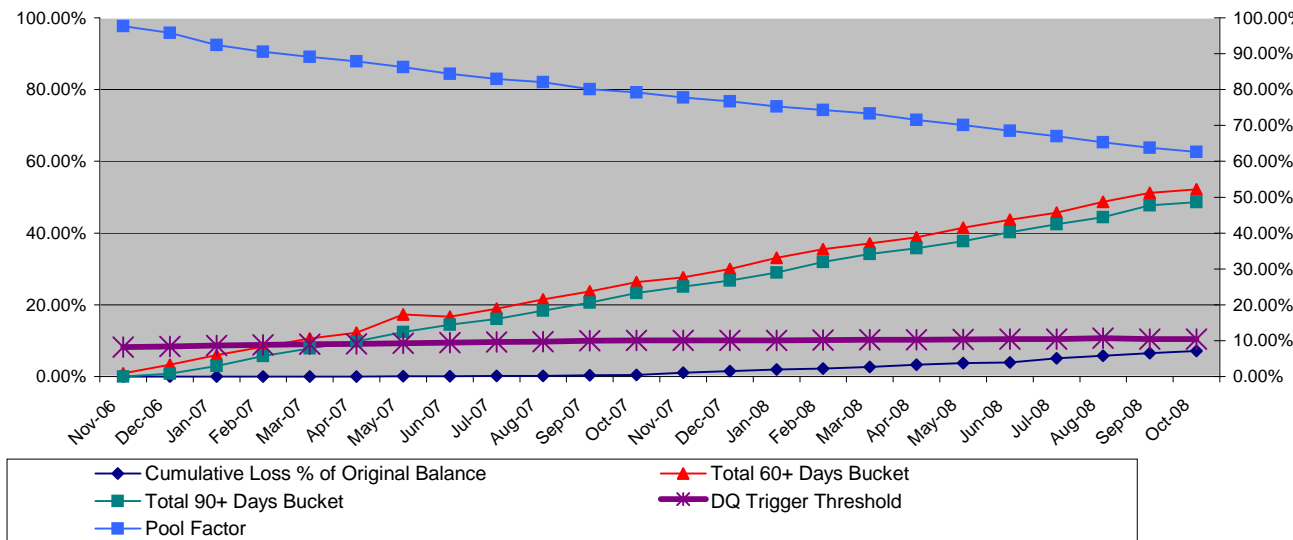
Credit Enhancement Graph



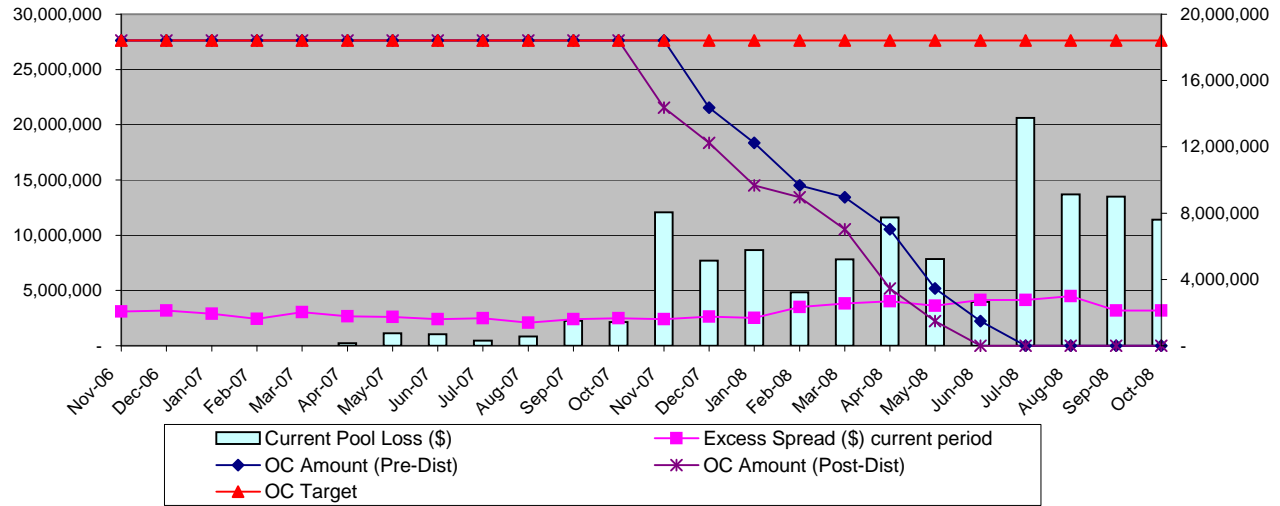
Delinquency Graph



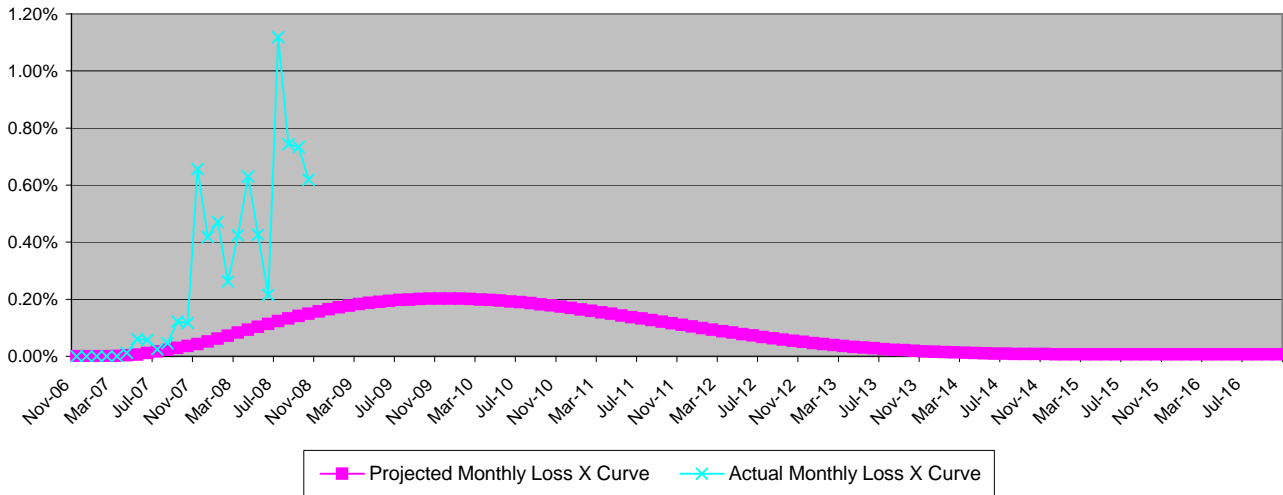
Performance Trend Analysis



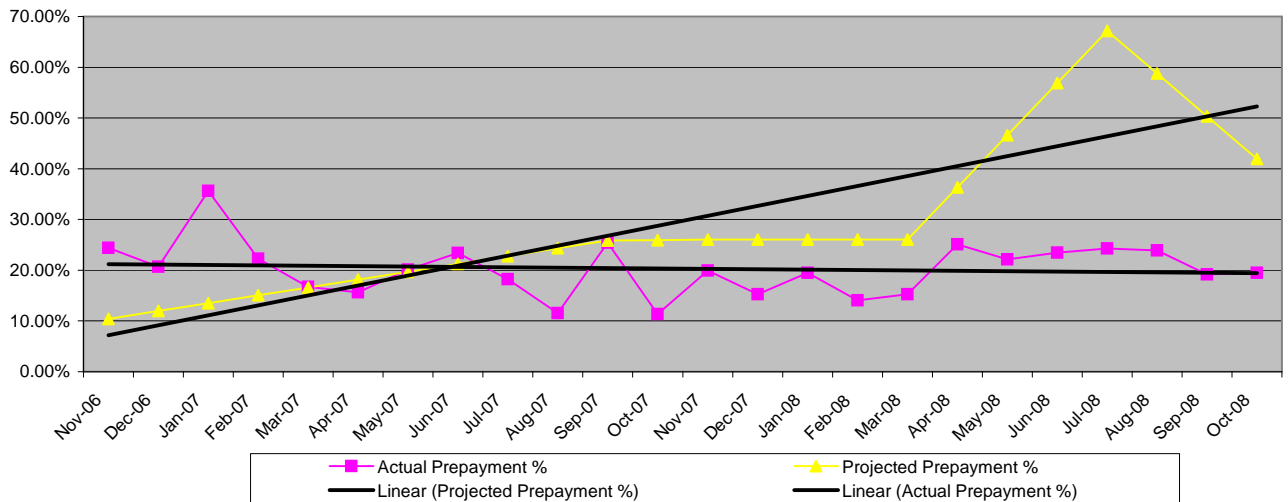
Overcollateralization, Excess Spread & Monthly Losses



Loss Timing Curve vs. Actual Collateral Losses



Actual vs. Projected Prepayments



Copyright © 2007, DBRS Limited, DBRS, Inc. and DBRS (Europe) Limited (collectively, DBRS). All rights reserved. The information upon which DBRS ratings and reports are based is obtained by DBRS from sources believed by DBRS to be accurate and reliable. DBRS does not perform any audit and does not independently verify the accuracy of the information provided to it. DBRS ratings, reports and any other information provided by DBRS are provided "as is" and without warranty of any kind. DBRS hereby disclaims any representation or warranty, express or implied, as to the accuracy, timeliness, completeness, merchantability, fitness for any particular purpose or non-infringement of any of such information. In no event shall DBRS or its directors, officers, employees, independent contractors, agents and representatives (collectively, DBRS Representatives) be liable (1) for any inaccuracy, delay, interruption in service, error or omission or for any resulting damages or (2) for any direct, indirect, incidental, special, compensatory or consequential damages with respect to any error (negligent or otherwise) or other circumstance or contingency within or outside the control of DBRS or any DBRS Representatives in connection with or related to obtaining, collecting, compiling, analyzing, interpreting, communicating, publishing or delivering any information. Ratings and other opinions issued by DBRS are, and must be construed solely as, statements of opinion and not statements of fact as to credit worthiness or recommendations to purchase, sell or hold any securities. DBRS receives compensation, ranging from US\$1,000 to US\$750,000 (or the applicable currency equivalent) from issuers, insurers, guarantors and/or underwriters of debt securities for assigning ratings. This publication may not be reproduced, retransmitted or distributed in any form without the prior written consent of DBRS.