



Nomura Alternative Loan Trust, Series 2005-AR3

Pool Summary		December-08	
<b>Delinquency Status Summary:</b>			
	%	\$	#
Current	73.28%	\$141,649,968	-
30 Day DQ	3.03%	\$5,856,979	-
60 Day DQ	1.35%	\$2,609,545	-
90+ Day DQ	3.39%	\$6,552,857	-
Bankruptcy	1.65%	\$3,189,444	-
Foreclosure	11.77%	\$22,751,366	-
Real Estate Owned (REO)	5.53%	\$10,689,469	-
Total 90+ Days Bucket	22.34%	\$43,183,137	-
Total	100.00%	\$193,299,629	-

<b>Excess Spread, Delinquency and Loss Analysis:</b>			
	%	\$	
Excess Spread (XS) Annualized	1.61%	3,110,463	
Monthly XS - 3 month average	1.55%	3,000,048	
Average 90 day+ DQ - 3 month average	19.65%	37,974,838	
Delinquency Coverage Ratio:	0.22		
3 Month Average XS + OC / potential losses from Total 90+ Days Bucket			
DBRS Single B Cum loss assumption at Deal inception	1.00%	5,182,977	
Monthly losses - 3 month average	0.08%	430,867	
Cumulative Losses to date as a percent of original balance	1.53%	7,904,128.19	

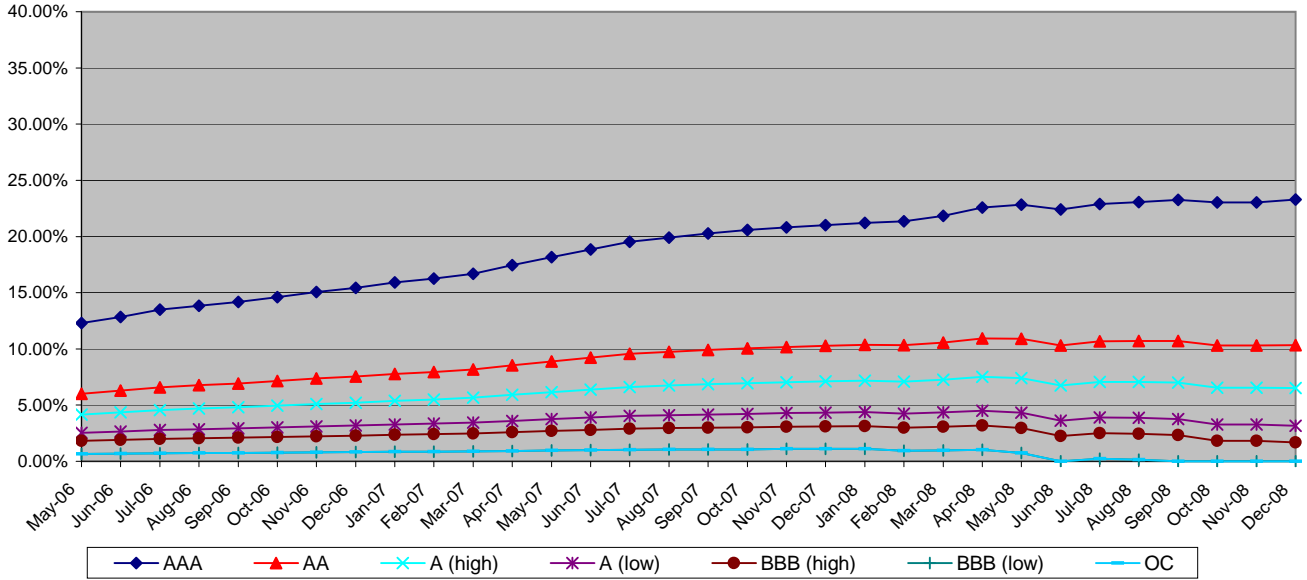
<b>Pool Statistics:</b>			
<b>Current:</b>		<b>Original</b>	
Mortgage Originator	FNBN (29%), Gateway(11%)	Balance	518,297,715
Servicer	GMAC Mortgage Corporation	Mortgage Insurer	NA
Provider of Reps and Warranties	Nomura Credit and Capital Corp.	% of loans with MI	11.91%
Trustee	HSBC Bank USA, N.A.	DT LTV Coverage	64.91%
Repurchase/EPDs	NA	LTV	77.43%
% of original balance with modifications	NA	Combined LTV	86.13%
% repayment plan/forebearance	NA	FICO	706
Current balance	\$193,299,629	RWFICO	700
Pool Factor	37.30%	WAM	360
Current OC as % of current Balance	0.00%	WAC	6.31%
Months of seasoning	42	OC (At Issuance)	0.50%
Pricing CPR	25.00%	OC Target	0.50%
Current CPR	17.76%	Fixed	0.00%
WAM	318	ARM	100.00%
WAC	6.20%	average month to reset	40
<b>Trigger &amp; Step-down Analysis:</b>		Cash-out	20.71%
DQ Trigger	FAIL	Purchase	73.60%
Total 60+ days Bucket	23.69%	1st lien with piggy back	59.72%
DQ Trigger Threshold	9.31%	Second Liens	0.00%
Cum Loss Trigger	FAIL	Fully Amortizing	21.21%
Cumulative Losses to date as a percent of original balance	1.53%	Balloons	0.00%
Cum Loss Trigger Threshold	1.00%	Interest Only	78.79%
Step-down Date	No	average I/O period	97
		Investor Owned	20.82%
		Single Family	73.56%
		Full Doc	16.89%
		Limited Doc	67.06%
		Stated Doc	16.05%

[PARsurveillance@dbrs.com](mailto:PARsurveillance@dbrs.com)

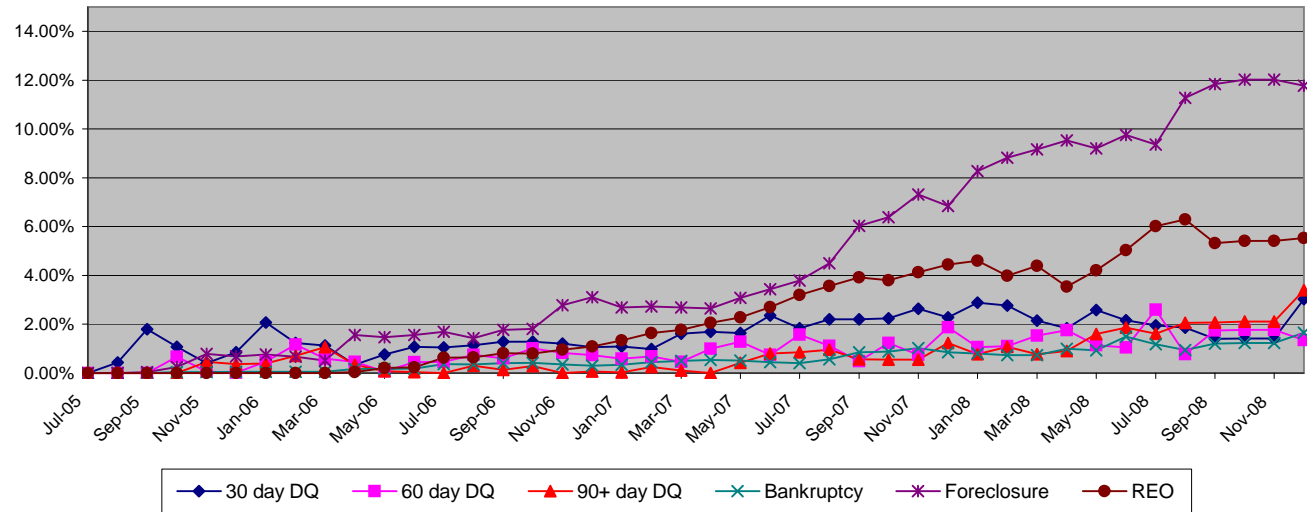
**Class Information**

<b>Class Name</b>	<b>Original Rating</b>	<b>Current Rating</b>	<b>Original CE %</b>	<b>Current CE %</b>	<b>Gross Loss %</b>	<b>Current Bond Balance \$</b>	<b>Current Period Writedown \$</b>	<b>Class Factor %</b>	<b>Curr CE / Orig. CE</b>	<b>Delinquency Coverage Ratio</b>
I-A-1	AAA	AAA	9.95%	23.28%	10.50%	46,360,465	-	19.68%	2.34	3.53
I-A-2	AAA	AAA	9.95%	23.28%	10.50%	5,151,163	-	19.68%	2.34	3.53
II-A	AAA	AAA	9.95%	23.28%	10.50%	34,114,115	-	45.07%	2.34	3.53
III-A-1	AAA	AAA	9.95%	23.28%	10.50%	59,548,176	-	47.51%	2.34	3.53
III-A-2	AAA	AAA	9.95%	23.28%	10.50%	3,133,964	-	47.51%	2.34	3.53
M1	AA	C	4.85%	10.32%	6.00%	25,034,000	-	100.00%	2.13	1.69
M2	A (high)	C	3.35%	6.52%	4.67%	7,360,000	-	100.00%	1.95	1.15
M3	A (low)	C	2.10%	3.17%	3.58%	6,479,000	-	100.00%	1.51	0.67
M4	BBB (high)	C	1.55%	1.69%	3.17%	2,851,000	-	100.00%	1.09	0.46
M5	BBB (low)	C	0.60%	0.00%	2.42%	3,267,746	285,973	70.06%	0.00	-
P	NR	NR	0.60%	0.00%	-	-	-	0.00%	0.00	-
OC	NR	NR	0.60%	0.00%	-	-	-	0.00%	0.00	-

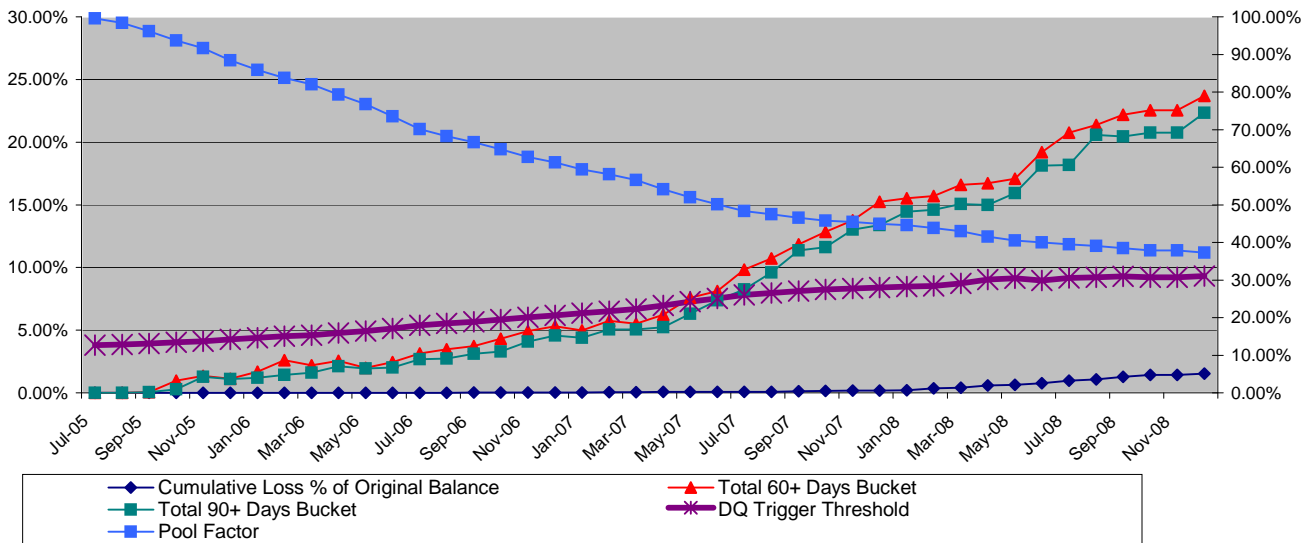
**Credit Enhancement Graph**



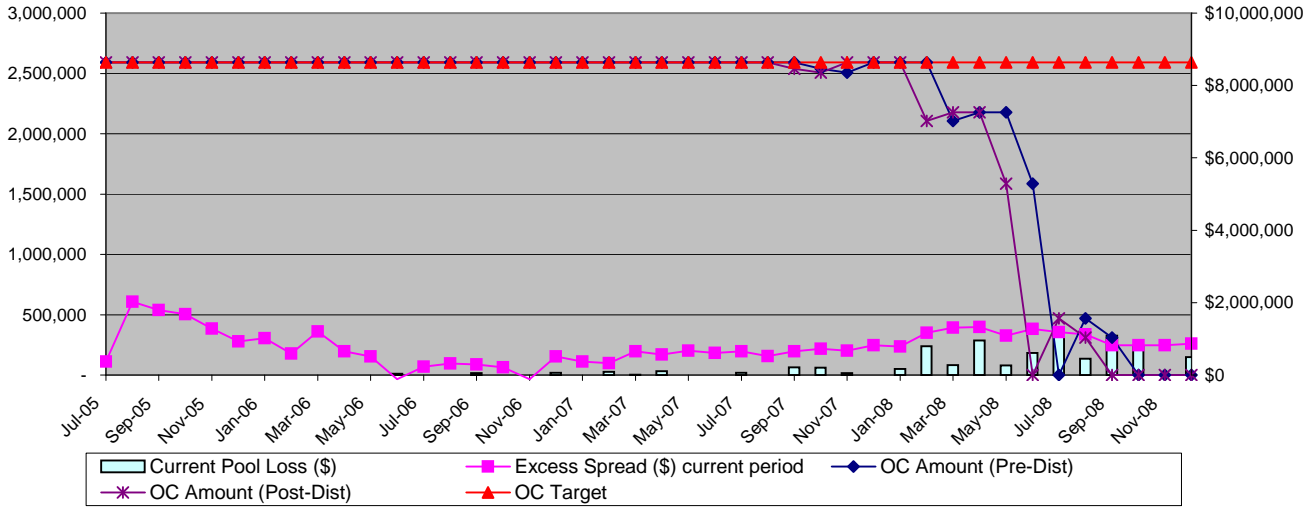
**Delinquency Graph**



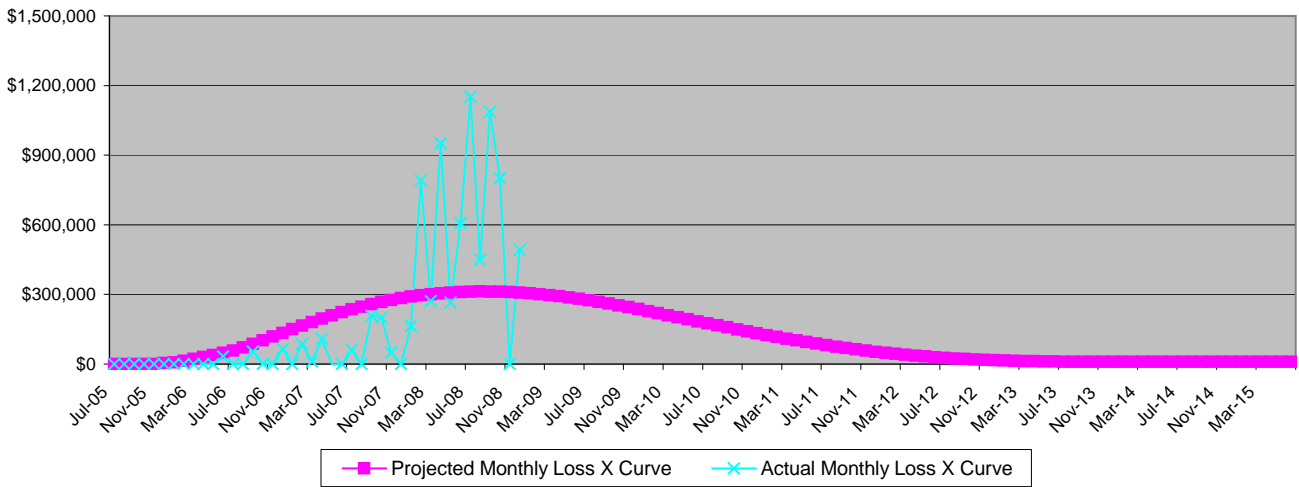
**Performance Trend Analysis**



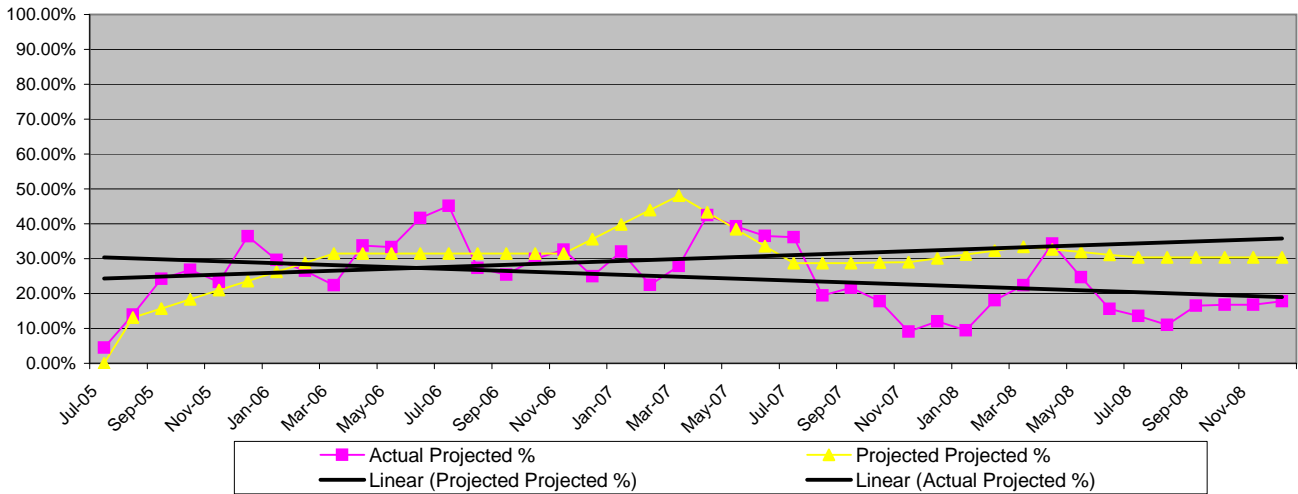
### Overcollateralization, Excess Spread & Monthly Losses



### Loss Timing Curve vs. Actual Collateral Losses



### Actual vs. Projected Prepayments



Copyright © 2007, DBRS Limited, DBRS, Inc. and DBRS (Europe) Limited (collectively, DBRS). All rights reserved. The information upon which DBRS ratings and reports are based is obtained by DBRS from sources believed by DBRS to be accurate and reliable. DBRS does not perform any audit and does not independently verify the accuracy of the information provided to it. DBRS ratings, reports and any other information provided by DBRS are provided "as is" and without warranty of any kind. DBRS hereby disclaims any representation or warranty, express or implied, as to the accuracy, timeliness, completeness, merchantability, fitness for any particular purpose or non-infringement of any of such information. In no event shall DBRS or its directors, officers, employees, independent contractors, agents and representatives (collectively, DBRS Representatives) be liable (1) for any inaccuracy, delay, interruption in service, error or omission or for any resulting damages or (2) for any direct, indirect, incidental, special, compensatory or consequential damages with respect to any error (negligent or otherwise) or other circumstance or contingency within or outside the control of DBRS or any DBRS Representatives in connection with or related to obtaining, collecting, compiling, analyzing, interpreting, communicating, publishing or delivering any information. Ratings and other opinions issued by DBRS are, and must be construed solely as, statements of opinion and not statements of fact as to credit worthiness or recommendations to purchase, sell or hold any securities. DBRS receives compensation, ranging from US\$1,000 to US\$750,000 (or the applicable currency equivalent) from issuers, insurers, guarantors and/or underwriters of debt securities for assigning ratings. This publication may not be reproduced, retransmitted or distributed in any form without the prior written consent of DBRS.