



Nomura Home Equity Loan, Inc. 2007-2

Pool Summary		December-08	
Delinquency Status Summary:			
	%	\$	#
Current	52.33%	\$336,360,561	-
30 Day DQ	9.07%	\$58,299,069	-
60 Day DQ	5.44%	\$34,966,586	-
90+ Day DQ	6.05%	\$38,887,472	-
Bankruptcy	2.55%	\$16,390,587	-
Foreclosure	14.88%	\$95,643,897	-
Real Estate Owned (REO)	9.68%	\$62,219,955	-
Total 90+ Days Bucket	33.16%	\$213,141,911	-
Total	100.00%	\$642,768,128	-

Excess Spread, Delinquency and Loss Analysis:			
	%	\$	
Excess Spread (XS) Annualized	6.81%	43,795,114	
Monthly XS - 3 month average	5.54%	35,637,464	
Total 90+ Days Bucket - 3 month average	29.50%	189,645,412	
Delinquency Coverage Ratio:	0.35		
3 Month Average XS + OC / potential losses from Total 90+ Days Bucket			
DBRS Single B Cum loss assumption at Deal inception	4.50%	41,878,270	
Monthly losses - 3 month average	0.98%	9,111,083	
Cumulative Losses to date as a percent of original balance	9.92%	92,280,481.45	

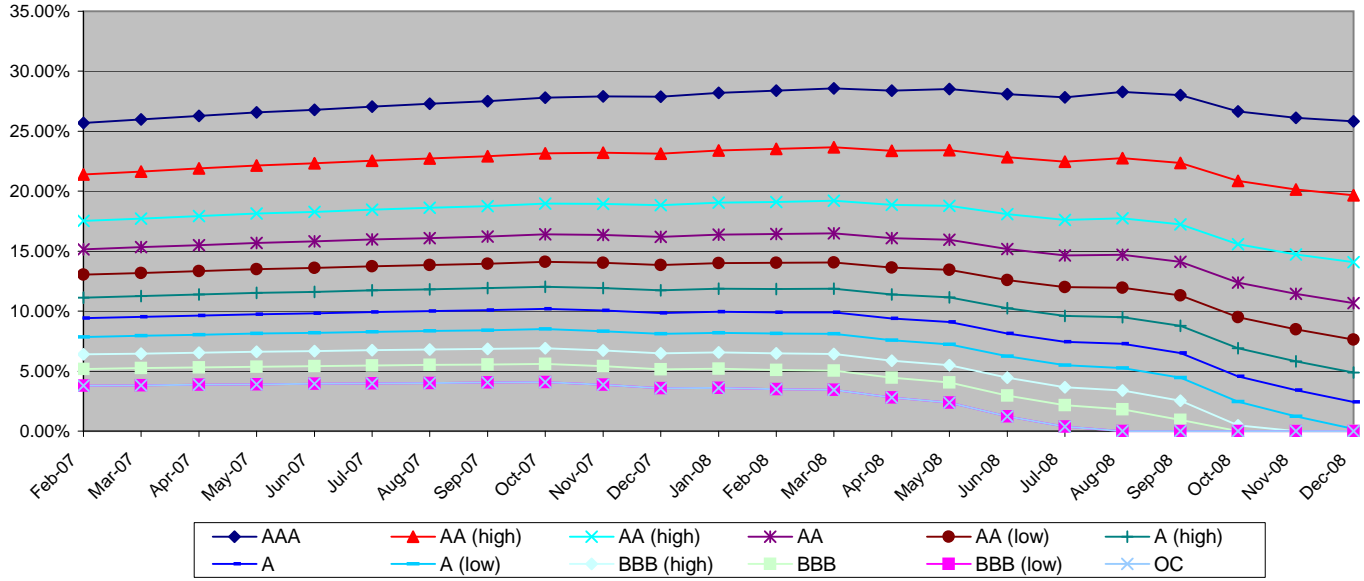
Pool Statistics:			
Current:		Original	
Mortgage Originator	Owinit Mortgage Solutions 42%, First NLC Financial Services 12%	Balance	930,628,229
Servicer	Ocwen Loan Servicing 93%, Equity One 7%, Wells Fargo Bank 1%	Mortgage Insurer	NA
Provider of Reps and Warranties	Nomura Credit and Capital Inc.	% of loans with MI	-
Trustee	HSBC Bank USA N.A.	DT LTV Coverage	-
Repurchase/EPDs	NA	LTV	82.64%
% of original balance with modifications	NA	Combined LTV	88.89%
% repayment plan/forebearance	NA	FICO	633
Current balance	\$642,768,128	RWFICO	615
Pool Factor	69.07%	WAM	357
Current OC as % of current Balance	0.00%	WAC	8.32%
Months of seasoning	23	OC (At Issuance)	3.75%
Pricing CPR	28.80%	OC Target	3.75%
Current CPR	29.83%	Fixed	23.98%
WAM	417	ARM	76.02%
WAC	8.29%	average month to reset	27
Trigger & Step-down Analysis:		Cash-out	48.91%
DQ Trigger	FAIL	Purchase	47.20%
Total 60+ days Bucket	38.60%	1st lien with piggy back	37.75%
DQ Trigger Threshold	8.10%	Second Liens	6.04%
Cum Loss Trigger	FAIL	Fully Amortizing	36.45%
Cumulative Losses to date as a percent of original balance	9.92%	Balloons	51.68%
Cum Loss Trigger Threshold	3.80%	Interest Only	11.87%
Step-down Date	No	average I/O period	62
		Investor Owned	4.58%
		Single Family	88.30%
		Full Doc	-
		Limited Doc	86.42%
		Stated Doc	13.29%

PARsurveillance@dbrs.com

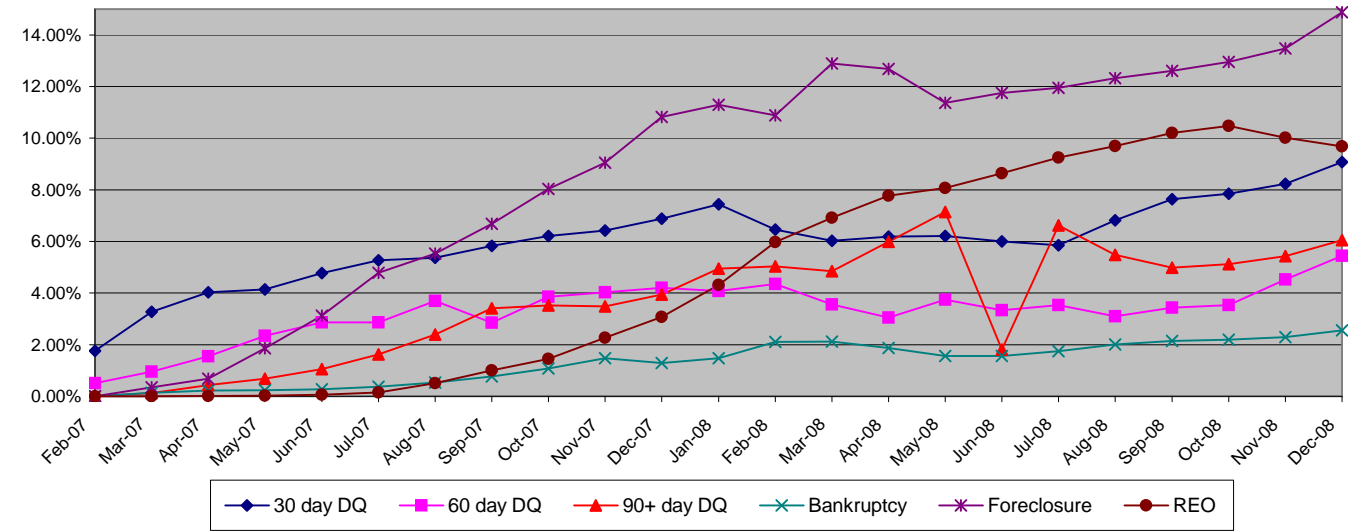
Class Information

Class Name	Original Rating	Current Rating	Original CE %	Current CE %	Gross Loss %	Current Bond Balance \$	Current Period Writedown \$	Class Factor %	Curr CE / Orig. CE	Delinquency Coverage Ratio
I-A-1	AAA	A	25.50%	25.81%	26.50%	238,053,396	-	66.34%	1.01	1.99
II-A-1	AAA	A	25.50%	25.81%	26.50%	125,095,079	-	56.66%	1.01	1.99
II-A-2	AAA	BBB	25.50%	25.81%	26.50%	26,333,000	-	100.00%	1.01	1.99
II-A-3	AAA	BB	25.50%	25.81%	26.50%	65,731,000	-	100.00%	1.01	1.99
II-A-4	AAA	BB	25.50%	25.81%	26.50%	21,643,000	-	100.00%	1.01	1.99
M-1	AA (high)	C	21.25%	19.66%	21.33%	39,551,000	-	100.00%	0.93	1.60
M-2	AA (high)	C	17.40%	14.08%	21.33%	35,829,000	-	100.00%	0.81	1.25
M-3	AA	C	15.05%	10.68%	18.75%	21,869,000	-	100.00%	0.71	1.03
M-4	AA (low)	C	12.95%	7.64%	16.92%	19,543,000	-	100.00%	0.59	0.84
M-5	A (high)	C	11.05%	4.89%	15.08%	17,681,000	-	100.00%	0.44	0.66
M-6	A	C	9.35%	2.43%	13.25%	15,820,000	-	100.00%	0.26	0.51
M-7	A (low)	C	7.80%	0.19%	11.83%	14,424,000	-	100.00%	0.02	0.36
M-8	BBB (high)	C	6.35%	0.00%	10.42%	1,195,653	6,993,181	8.86%	0.00	-
M-9	BBB	C	5.15%	0.00%	9.00%	-	-	0.00%	0.00	-
B-1	BBB (low)	B (high)	3.75%	0.00%	8.17%	-	-	0.00%	0.00	-
OC	NR	NR	3.75%	0.00%	-	-	-	0.00%	0.00	-
P	NR	NR	3.75%	0.00%	-	-	-	0.00%	0.00	-

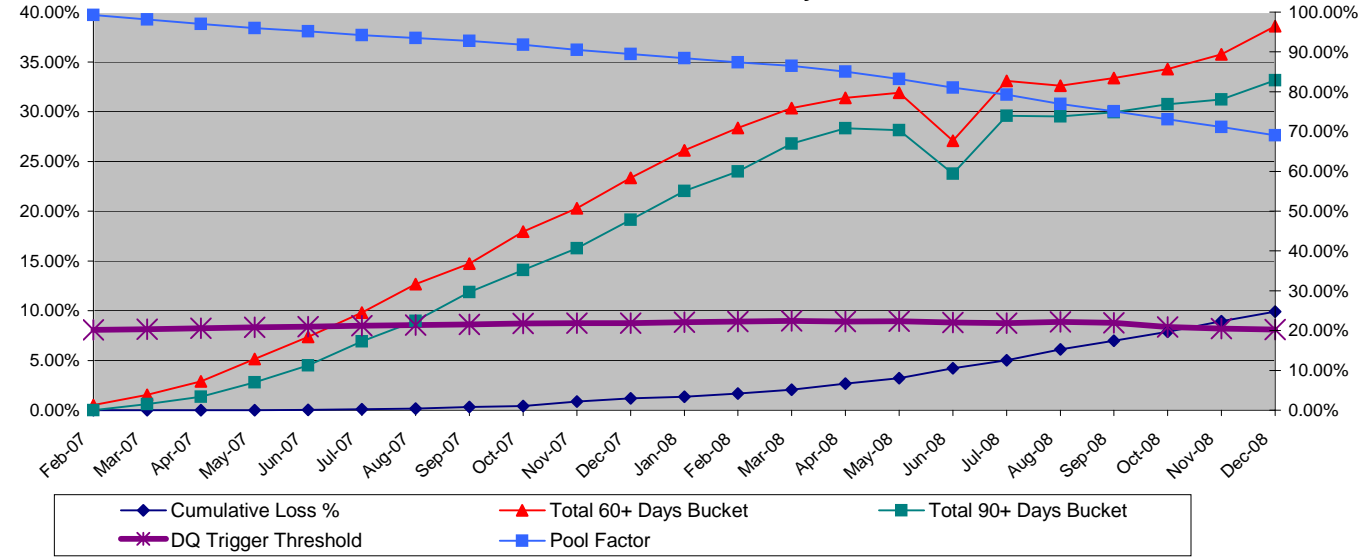
Credit Enhancement Graph



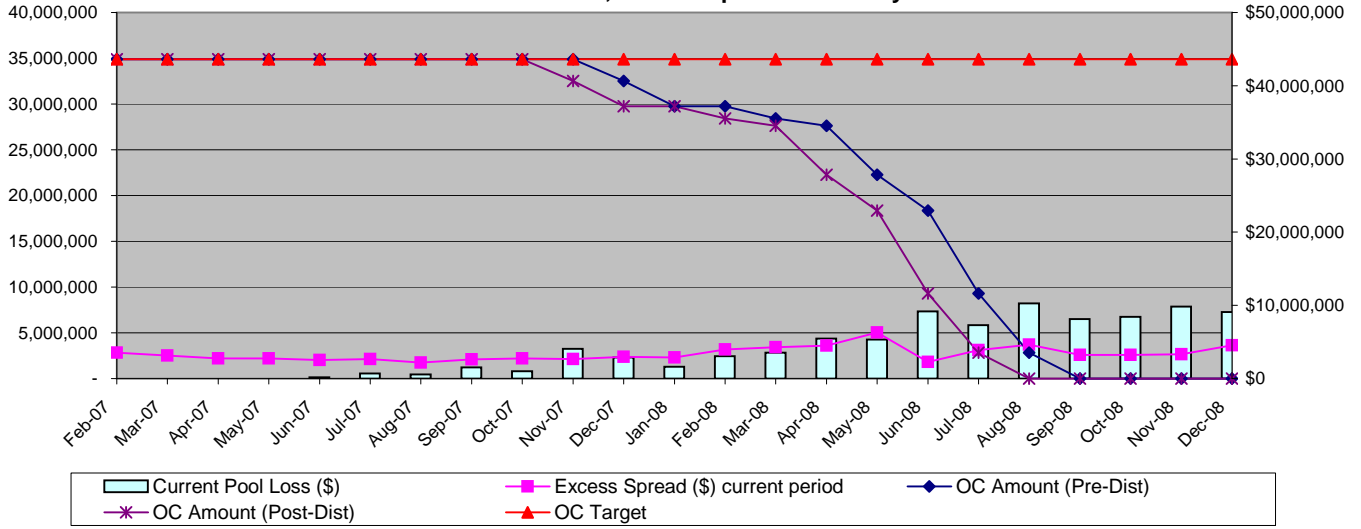
Delinquency Graph



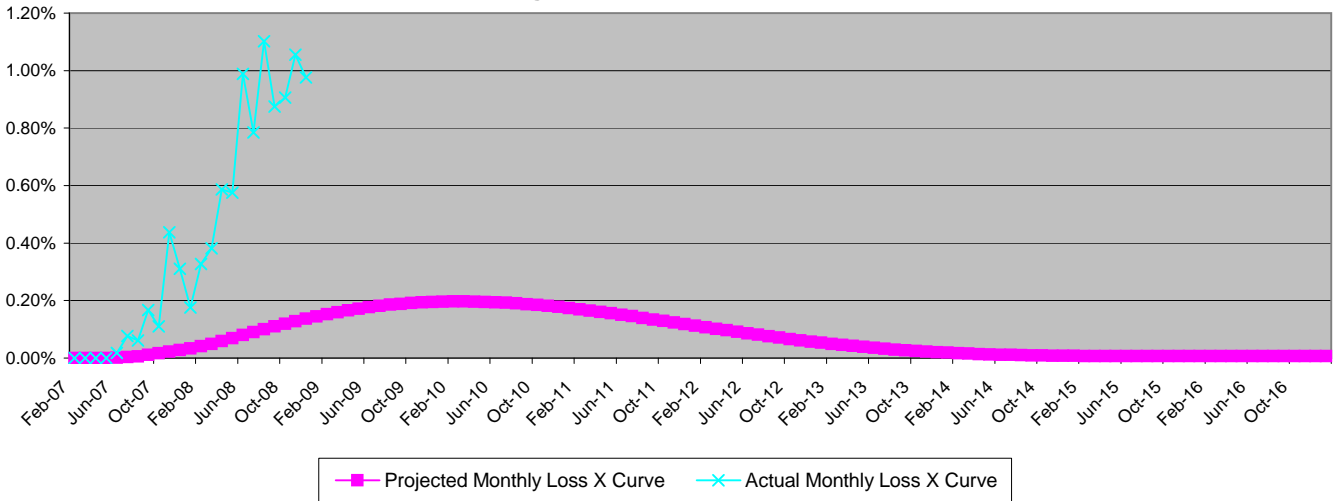
Performance Trend Analysis



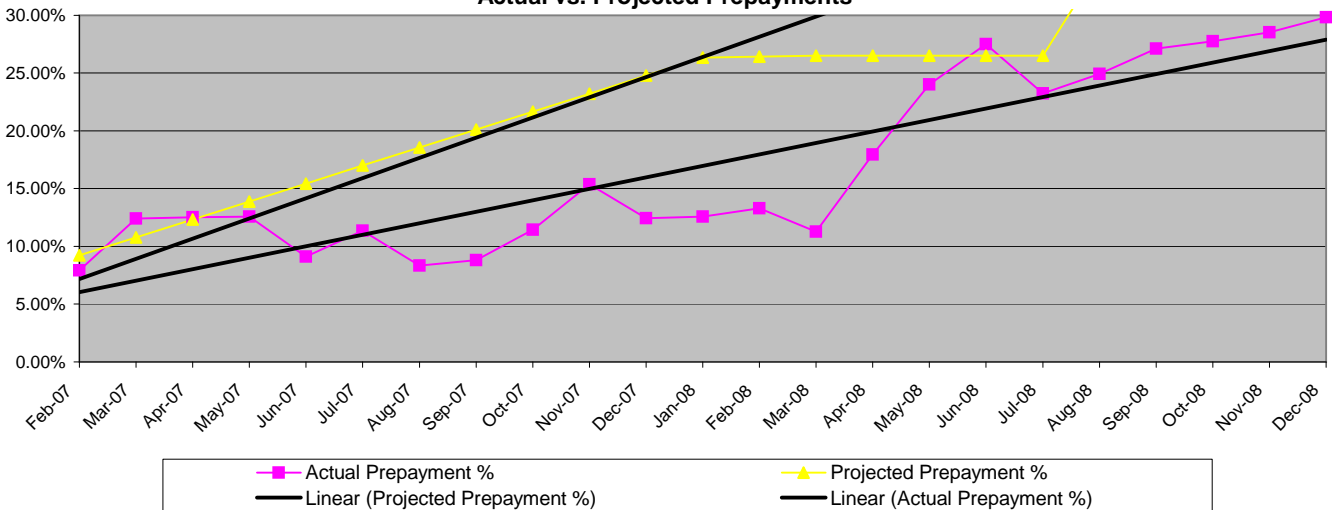
Overcollateralization, Excess Spread & Monthly Losses



Loss Timing Curve vs. Actual Collateral Losses



Actual vs. Projected Prepayments



Copyright © 2007, DBRS Limited, DBRS, Inc. and DBRS (Europe) Limited (collectively, DBRS). All rights reserved. The information upon which DBRS ratings and reports are based is obtained by DBRS from sources believed by DBRS to be accurate and reliable. DBRS does not perform any audit and does not independently verify the accuracy of the information provided to it. DBRS ratings, reports and any other information provided by DBRS are provided "as is" and without warranty of any kind. DBRS hereby disclaims any representation or warranty, express or implied, as to the accuracy, timeliness, completeness, merchantability, fitness for any particular purpose or non-infringement of any of such information. In no event shall DBRS or its directors, officers, employees, independent contractors, agents and representatives (collectively, DBRS Representatives) be liable (1) for any inaccuracy, delay, interruption in service, error or omission or for any resulting damages or (2) for any direct, indirect, incidental, special, compensatory or consequential damages with respect to any error (negligent or otherwise) or other circumstance or contingency within or outside the control of DBRS or any DBRS Representatives in connection with or related to obtaining, collecting, compiling, analyzing, interpreting, communicating, publishing or delivering any information. Ratings and other opinions issued by DBRS are, and must be construed solely as, statements of opinion and not statements of fact as to credit worthiness or recommendations to purchase, sell or hold any securities. DBRS receives compensation, ranging from US\$1,000 to US\$750,000 (or the applicable currency equivalent) from issuers, insurers, guarantors and/or underwriters of debt securities for assigning ratings. This publication may not be reproduced, retransmitted or distributed in any form without the prior written consent of DBRS.