

Nomura Home Equity Loan Trust, Series 2006-HE2



Pool Summary	March-09		
Delinquency Status Summary:			
	%	\$	#
Current	50.05%	\$150,373,806	-
30 Day DQ	8.27%	\$24,846,981	-
60 Day DQ	3.90%	\$11,717,439	-
90+ Day DQ	9.09%	\$27,310,647	-
Bankruptcy	3.25%	\$9,764,533	-
Foreclosure	14.15%	\$42,513,274	-
Real Estate Owned (REO)	11.29%	\$33,920,485	-
Total 90+ Days Bucket	37.78%	\$113,508,939	-
Total	100.00%	\$300,447,164	-

Excess Spread, Delinquency and Loss Analysis:			
	%	\$	
Excess Spread (XS) Annualized	7.17%	21,539,417	
Monthly XS - 3 month average	7.44%	22,351,158	
Total 90+ Days Bucket - 3 month average	35.71%	107,283,836	
Delinquency Coverage Ratio:	0.41		
3 Month Average XS + OC / potential losses from Total 90+ Days Bucket			
DBRS Single B Cum loss assumption at Deal inception	4.25%	31,594,546	
Monthly losses - 3 month average	0.65%	4,816,764	
Cumulative Losses to date as a percent of original balance	10.00%	74,350,972.29	

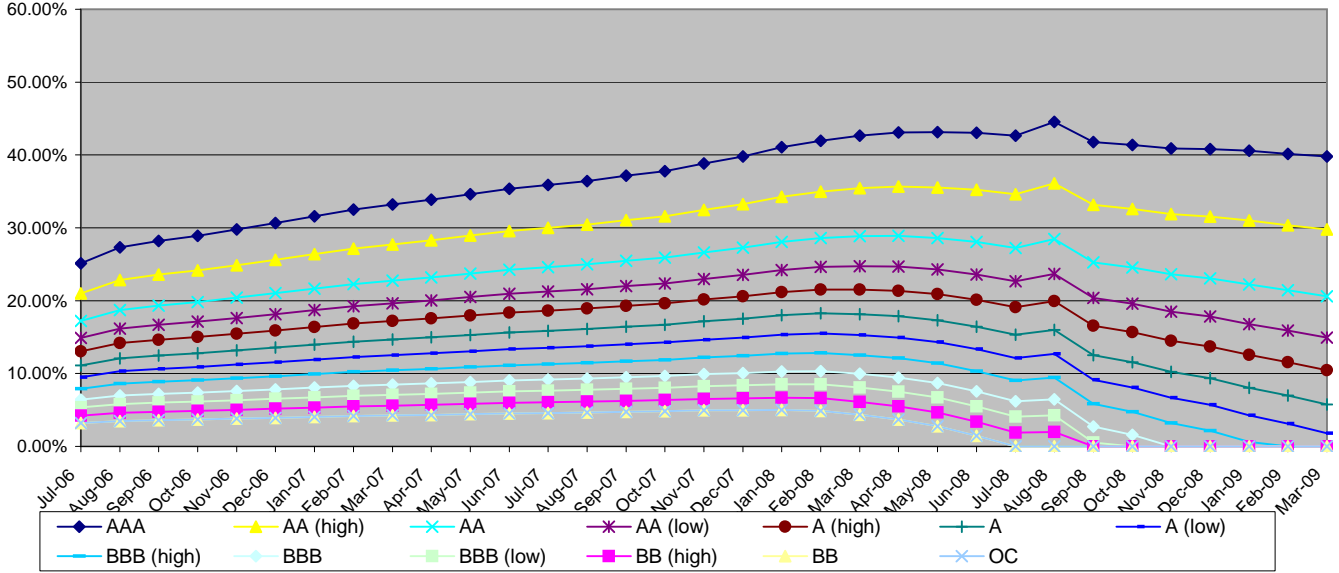
Pool Statistics:			
Current:		Original	
Mortgage Originator	Ownit Mortgage Solutions 39%, Quick Loan Funding 37%	Balance	743,401,087
Servicer	Ocwen Loan Servicing, LLC	Mortgage Insurer	NA
Provider of Reps and Warranties	NOMURA CREDIT & CAPITAL, INC	% of loans with MI	0.00%
Trustee	HSBC Bank USA N.A.	DT LTV Coverage	0.00%
Repurchase/EPDs	NA	LTV	79.45%
% of original balance with modifications	NA	Combined LTV	84.42%
% repayment plan/forebearance	NA	FICO	617
Current balance	\$300,447,164	RWFICO	598
Pool Factor	40.42%	WAM	357
Current OC as % of current Balance	0.00%	WAC	7.70%
Months of seasoning	33	OC (At Issuance)	3.15%
Pricing CPR	32.60%	OC Target	3.15%
Current CPR	26.49%	Fixed	24.00%
WAM	320	ARM	76.00%
WAC	7.67%	average month to reset	26
Trigger & Step-down Analysis		Cash-out	62.40%
DQ Trigger	FAIL	Purchase	33.80%
Total 60+ days Bucket	41.68%	1st lien with piggy back	29.47%
DQ Trigger Threshold	10.66%	Second Liens	1.61%
Cum Loss Trigger	FAIL	Fully Amortizing	63.08%
Cumulative Losses to date as a percent of original balance	10.00%	Balloons	36.92%
Cum Loss Trigger Threshold	3.20%	Interest Only	0.00%
Step-down Date	No	average I/O period	66
		Investor Owned	3.70%
		Single Family	96.60%
		Full Doc	0.00%
		Limited Doc	63.41%
		Stated Doc	36.59%

PARsurveillance@dbrs.com

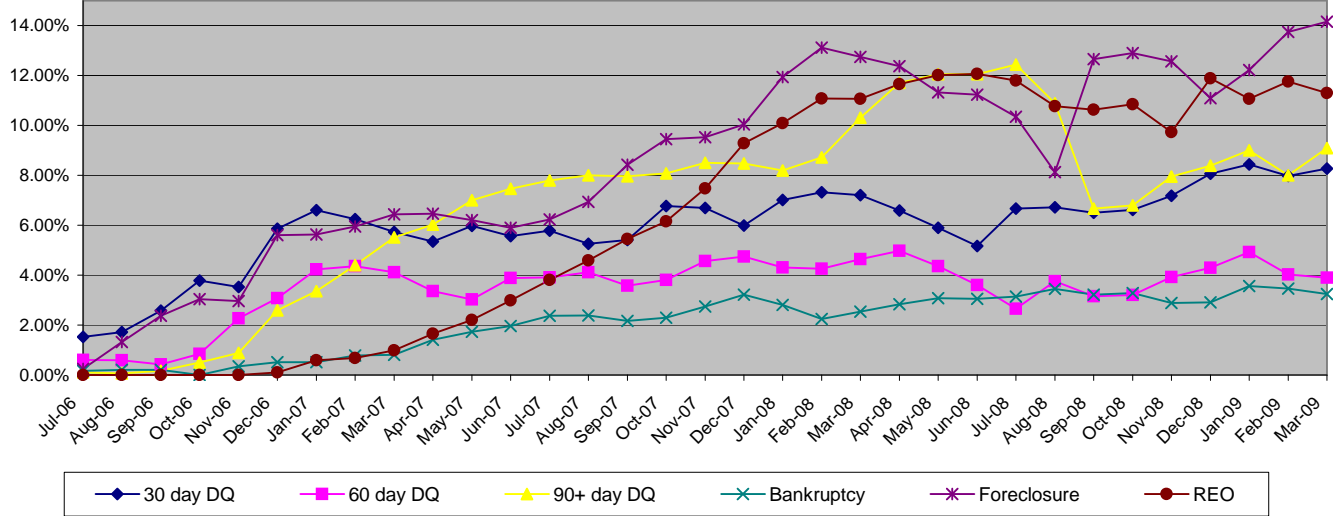
Class Information

Class Name	Original Rating	Current Rating	Original CE %	Current CE %	Gross Loss %	Current Bond Balance \$	Current Period Writedown \$	Class Factor %	Curr CE / Orig. CE	Delinquency Coverage Ratio
A-1	AAA	AAA	24.65%	39.79%	24.50%	-	-	0.00%	1.61	2.63
A-2	AAA	AAA	24.65%	39.79%	24.50%	42,807,082	-	70.36%	1.61	2.63
A-3	AAA	AA	24.65%	39.79%	24.50%	103,062,000	-	100.00%	1.61	2.63
A-4	AAA	A	24.65%	39.79%	24.50%	35,042,000	-	100.00%	1.61	2.63
M-1	AA (high)	A (low)	20.60%	29.77%	20.17%	30,107,000	-	100.00%	1.44	2.07
M-2	AA	BB (high)	16.90%	20.61%	18.00%	27,505,000	-	100.00%	1.22	1.56
M-3	AA (low)	BB (low)	14.60%	14.92%	16.08%	17,098,000	-	100.00%	1.02	1.25
M-4	A (high)	B	12.80%	10.47%	14.17%	13,381,000	-	100.00%	0.82	1.00
M-5	A	C	10.90%	5.77%	12.25%	14,124,000	-	100.00%	0.53	0.74
M-6	A (low)	C	9.30%	1.81%	10.92%	11,894,000	-	100.00%	0.19	0.52
M-7	BBB (high)	C	7.75%	0.00%	9.58%	5,427,082	6,094,918	47.10%	0.00	-
M-8	BBB	C	6.30%	0.00%	8.25%	-	10,779,000	0.00%	0.00	-
M-9	BBB (low)	C	5.25%	0.00%	7.50%	-	7,805,000	0.00%	0.00	-
B-1	BB (high)	B	4.15%	0.00%	6.75%	-	8,177,000	0.00%	0.00	-
B-2	BB	B (low)	3.15%	0.00%	6.00%	-	7,434,000	0.00%	0.00	-
P	NR	NR	3.15%	0.00%	-	-	-	0.00%	0.00	-
OC	NR	NR	3.15%	0.00%	-	-	-	0.00%	0.00	-

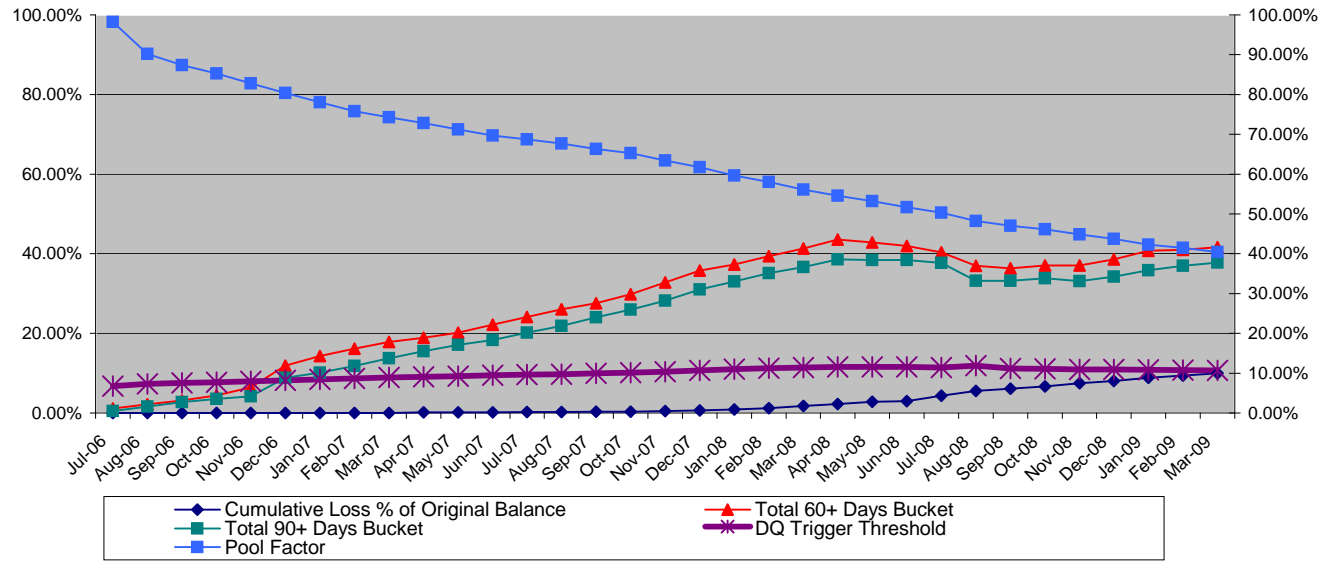
Credit Enhancement Graph



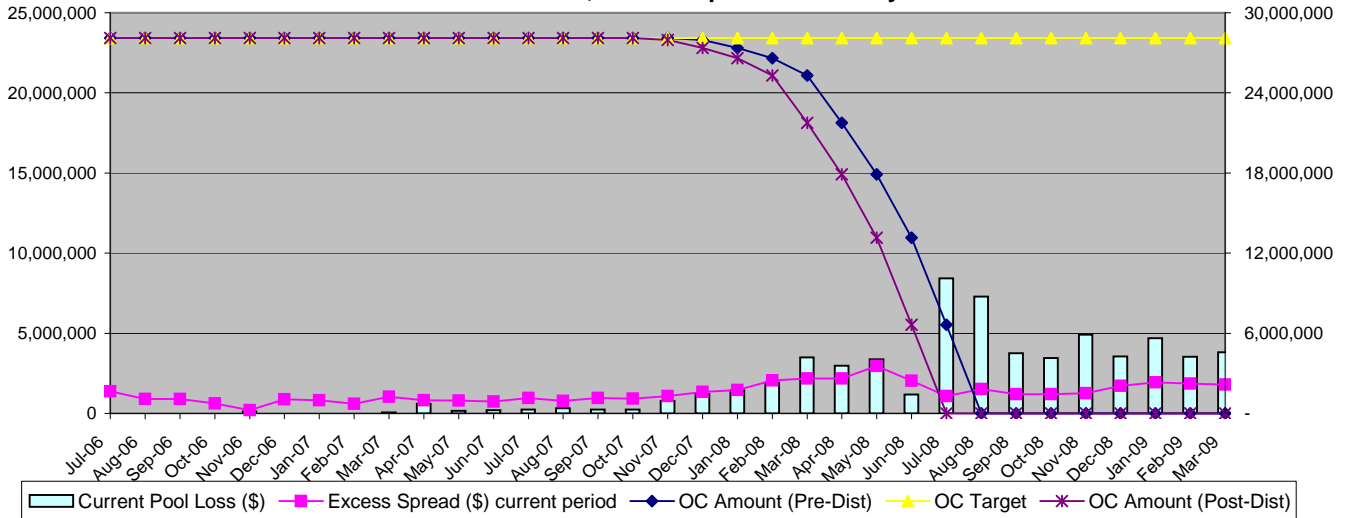
Delinquency Graph



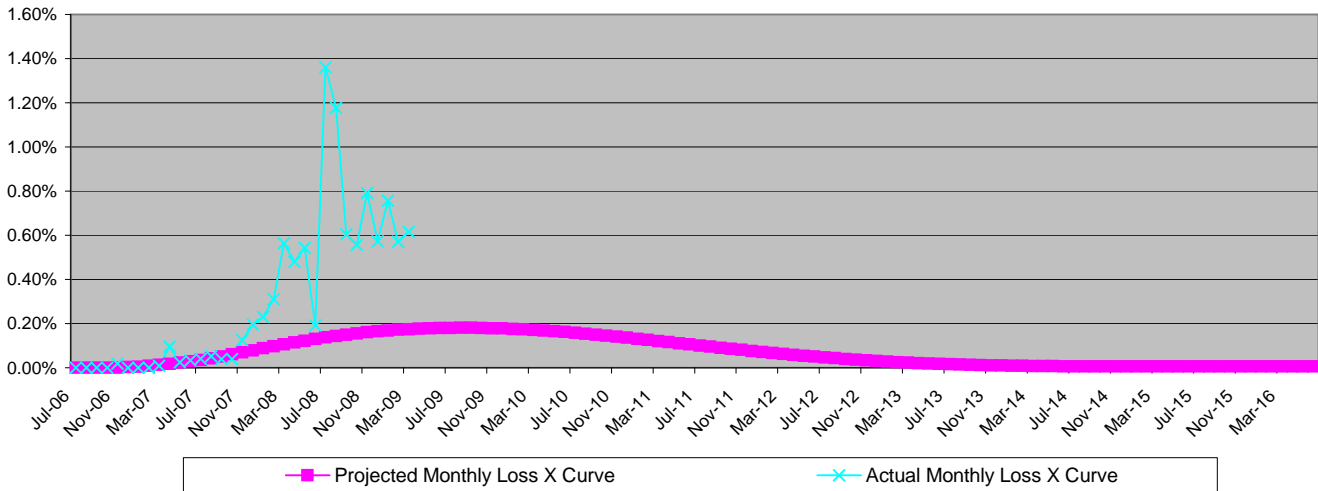
Performance Trend Analysis



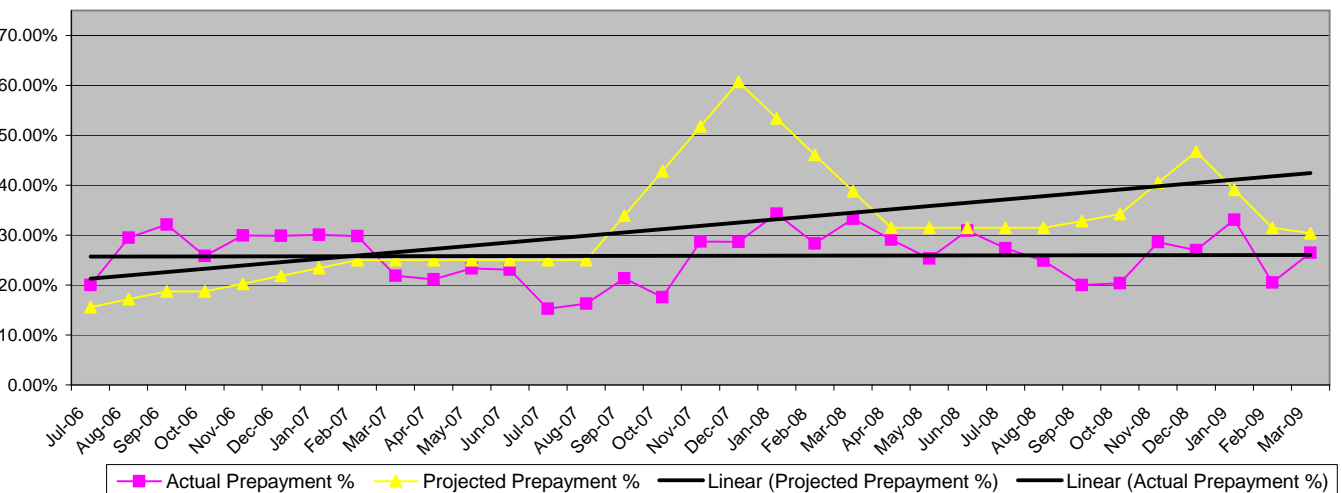
Overcollateralization, Excess Spread & Monthly Losses



Loss Timing Curve vs Actual Collateral Losses



Actual vs Projected Prepayments



Copyright © 2007, DBRS Limited, DBRS, Inc. and DBRS (Europe) Limited (collectively, DBRS). All rights reserved. The information upon which DBRS ratings and reports are based is obtained by DBRS from sources believed by DBRS to be accurate and reliable. DBRS does not perform any audit and does not independently verify the accuracy of the information provided to it. DBRS ratings, reports and any other information provided by DBRS are provided "as is" and without warranty of any kind. DBRS hereby disclaims any representation or warranty, express or implied, as to the accuracy, timeliness, completeness, merchantability, fitness for any particular purpose or non-infringement of any of such information. In no event shall DBRS or its directors, officers, employees, independent contractors, agents and representatives (collectively, DBRS Representatives) be liable (1) for any inaccuracy, delay, interruption in service, error or omission or for any resulting damages or (2) for any direct, indirect, incidental, special, compensatory or consequential damages with respect to any error (negligent or otherwise) or other circumstance or contingency within or outside the control of DBRS or any DBRS Representatives in connection with or related to obtaining, collecting, compiling, analyzing, interpreting, communicating, publishing or delivering any information. Ratings and other opinions issued by DBRS are, and must be construed solely as, statements of opinion and not statements of fact as to credit worthiness or recommendations to purchase, sell or hold any securities. DBRS receives compensation, ranging from US\$1,000 to US\$750,000 (or the applicable currency equivalent) from issuers, insurers, guarantors and/or underwriters of debt securities for assigning ratings. This publication may not be reproduced, retransmitted or distributed in any form without the prior written consent of DBRS.